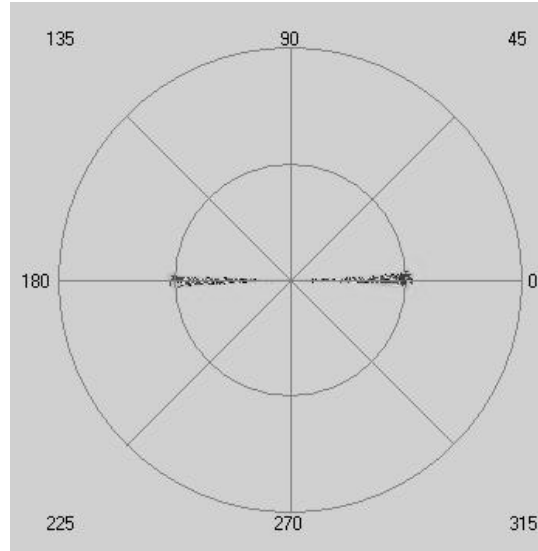


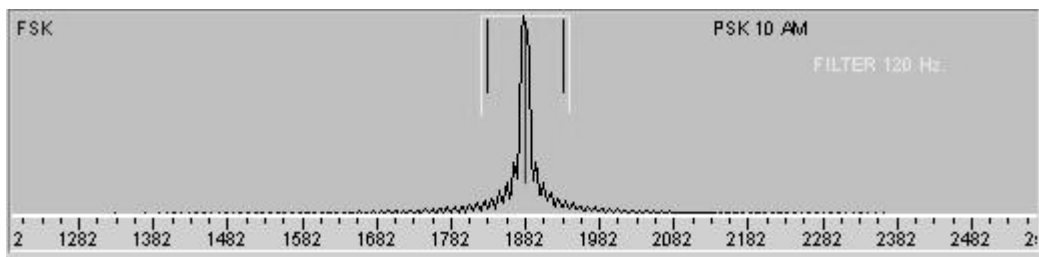
## PSKAM 10/31/50

PSKAM 10 / 31 / 50 modes are another variants on the normal PSK 31 mode. They use a 56 fixed length character set with a FEC, repeating each character 5 positions later.

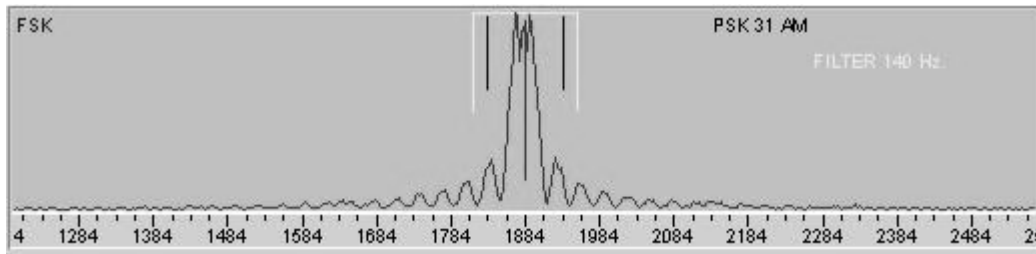
The signal is bi-phase modulated and the baud rate is fixed to 10, 31.25 or 50 baud.



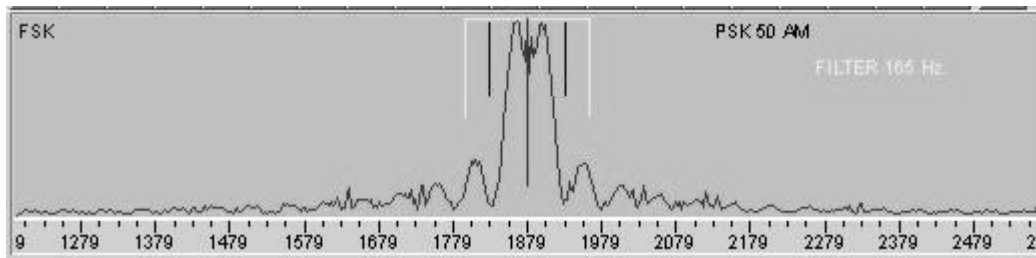
Picture 140: Phase plane of PSKAM 10/31/50



Picture 141: Spectrum of PSKAM 10



**Picture 142: Spectrum of PSKAM 31**



**Picture 143: Spectrum of PSKAM 50**

The bandwidth of PSKAM10 is around 50 Hz, PSKAM 31 around 80 Hz and PSKAM 50 around 260 Hz.

-----Seitenumbruch-----